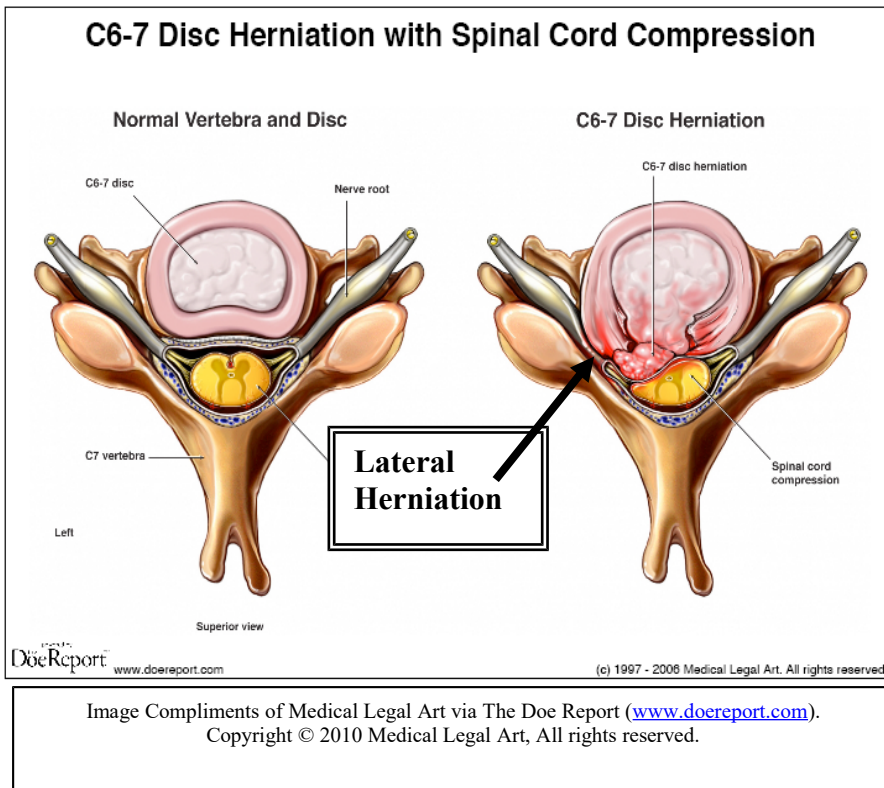


# MEDICAL-LEGAL FAX MONTHLY

## From the Desk of Dr. Brian Guetter at Exacta Care

**Directional Disc Displacements:** When a disk disrupts through external forces causing internal derangement, like when you step on a balloon and it pops from the internal pressure secondary to outside forces, it first tears the annular (outer) fibers. As a result, the derangement of the disk is focal or directional, **and this is indicative of trauma.** When a disc degenerates, it does so circumferentially, or over a region of the disc, and is called a bulge, with the understanding that in some instances, a bulge can also be traumatically induced. **When you see a medical report and there is a disc pathology associated with a directional displacement (i.e. lateral or anterior), then it is a herniation according to medical literature and is**



When a disc degenerates, it does so circumferentially, or over a region of the disc, and is called a bulge, with the understanding that in some instances, a bulge can also be traumatically induced. **When you see a medical report and there is a disc pathology associated with a directional displacement (i.e. lateral or anterior), then it is a herniation according to medical literature and is**

If you have questions about these definitions and how they can benefit your clients, please contact Dr. Brian Guetter at Exacta Care, 502-272-4700.

